

PANOTRADE

DOUBLE AND TRIPLE GLAZED SKYLIGHT INSTALLATION MANUAL

Congratulations on your purchase of a Panotrade Skylight. Please read the notes below before attempting to install your product.

When installing your Panotrade skylight, please ensure it is fitted with the correct fall to allow water to run off of the glazing. We recommend a gradient of 40mm for every 1000mm to run in accordance with the fall of your roof. We advise if you have any concerns before you silicone the skylight glazing in place, a simple water test can be carried out by pouring water on the highest point of the skylight and look for any pooling as the water runs away.

HOW SELF CLEANING GLASS WORKS

External window cleaning and maintenance has been simplified by the abundance of glass cleaning agents on the market. However, these glass cleaning agents still require sufficient elbow grease to get your windows looking great, so don't assume you will never need to physically give the skylights a good clean.

The Self Cleaning is a Two Step Cleaning Process. After years of development, it is the world's first self-cleaning glass to use a microscopic coating with a unique dual-action.

The first stage of the cleaning process is photo-catalytic. In this stage, the coating reacts with daylight to break down organic dirt.

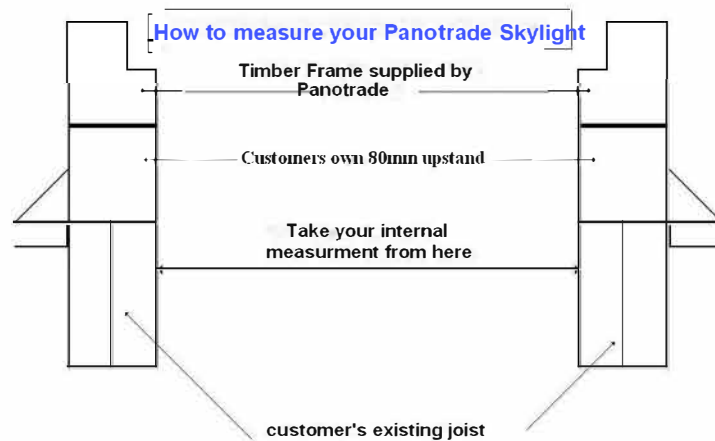
The second stage is hydrophilic. Here, instead of forming droplets, rainwater hits the glass and spreads evenly, running off in a sheet and taking the loosened dirt with it, also drying quickly, without leaving streaks.

All Panotrade skylights are manufactured with self-cleaning glass as standard. After installation the self-cleaning coating requires 5 - 7 days exposure to daylight to fully activate.



1

Firstly, measure out the area you wish to situate your Panotrade skylight and ensure all the internal dimensions are correct with the Skylight you have purchased

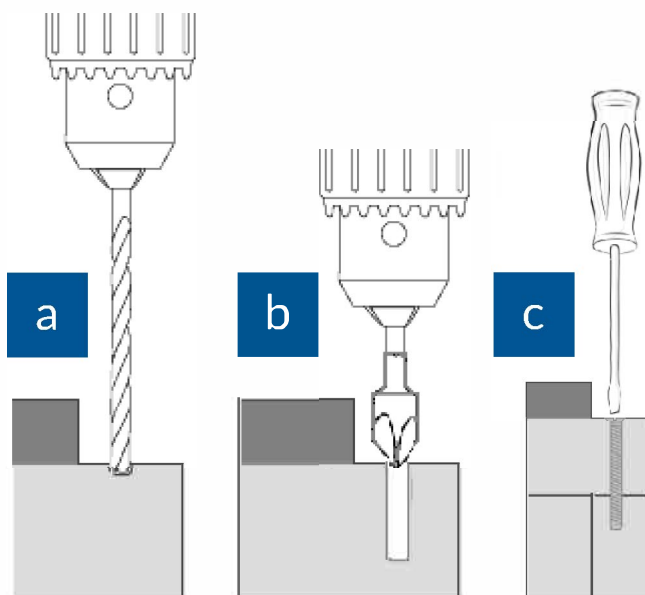


2

Position your Panotrade easy fit timber kerb over the structural opening, ensuring the internal face of the kerb is flush with your joist work / upstand.

When installing your skylight, please ensure it is fitted with a slight gradient to allow water to run off the glass (The skylight must be set at a gradient of 40mm for every 1000mm run in line with the fall of your roof).

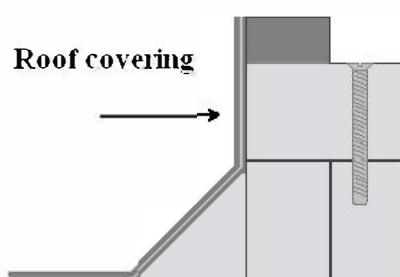
3



Measure out your fixing points on your kerb Panorooft recommend a fixing every 400mm, drill and countersink your fixing points.

Secure your easy fit kerb with your chosen fixing at the predrilled intervals, ensuring the head of the screw does not protrude the rebated kerb.

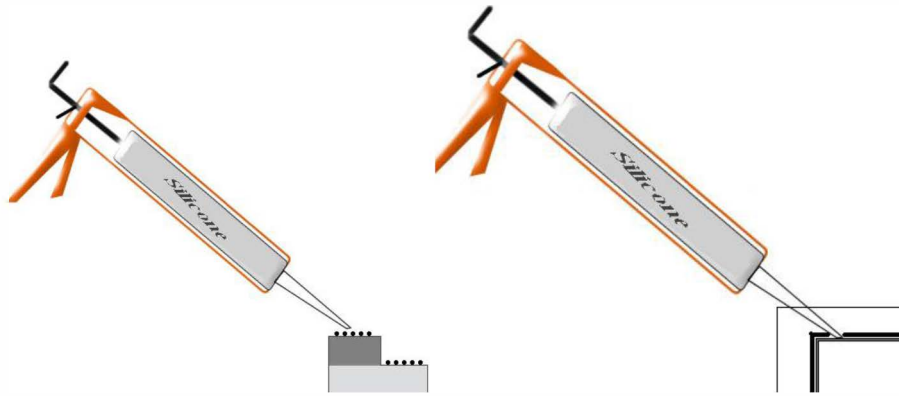
4



Now proceed to finish your roof covering up to the top of your easy fit kerb to fully encapsulate the kerb and joist / upstand.

5

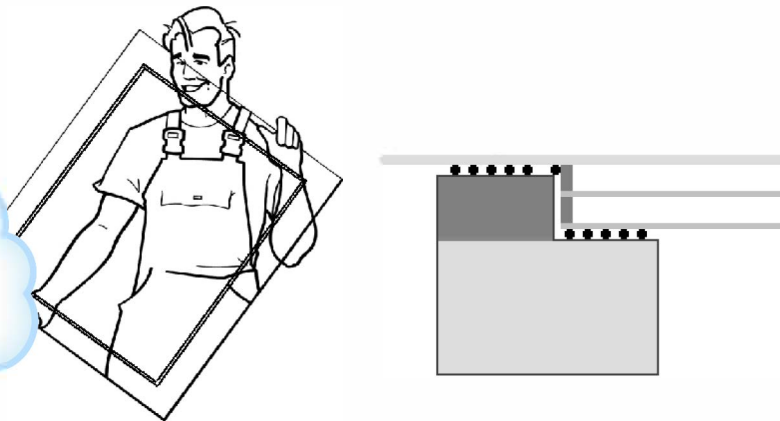
Apply silicone to both flat surfaces of the kerb and the corner of the rebated glass unit.



6

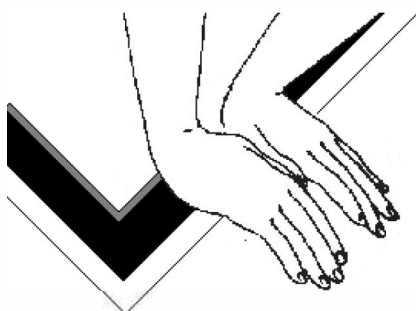
Position the Panotrade skylight glazing into the easy fit kerb (Please note: depending on the size you have purchased, this may require up to six people on site) ensuring the step of the glazing is set inside the rebate of the easy fit kerb

7



Apply pressure on the Panotrade skylight glazing to ensure an even spread of the silicone closing up any gaps and pushing out any air bubbles as you work your way around the perimeter of the rooflight. You should now have a impermeable bond between the easy fit kerb and the skylight glazing.

8



Leave the silicone to cure and then clean any excess off with a blade or scraper being careful not to scratch or mark your skylight glazing.

Sales Office:-

Panotrade LLP

21 Lyndale

Stevenage

Hertfordshire

SG1 1UB

Tel: 07474 384909

info@panotrade.co.uk

www.panotrade.co.uk

PANOTRADE